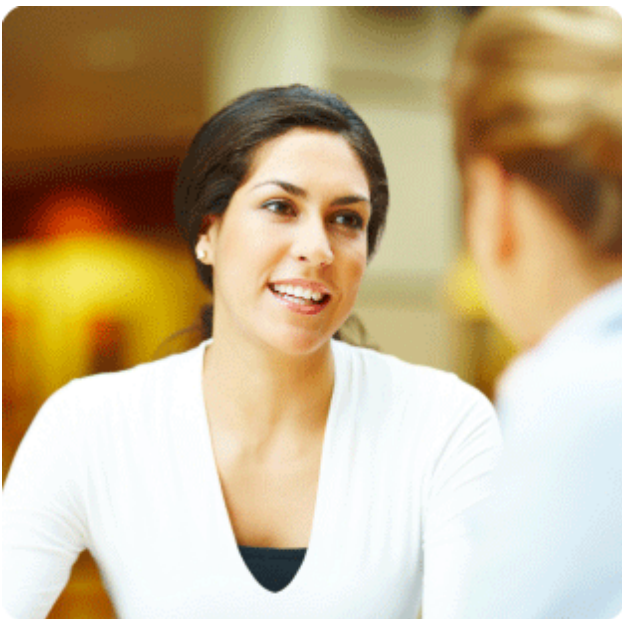


The Parent Support Advisor (PSA) role was initially created to help schools provide parenting support as an extended service, taking a proactive approach to, among other things, increase the number of parents and carers involved in their child's education.

The two-year PSA pilot programme which involved 20 local authorities was so successful that the role has now been rolled out nationally. New research from the TDA shows that almost 60% of schools are now benefiting from parent support advisors.*



In order to give parent support advisors (PSAs) the opportunity to get the knowledge and skills they need a new endorsed pathway was introduced within the Support Work in Schools qualification (SWiS) VQ. STAR has delivered this qualification since its inception and has now supported over 160 PSAs within schools.

Lisa Beaston, parent support advisor based at Selby Abbey Primary School undertook the SWiS PSA VQ through STAR as part of the second North Yorkshire cohort, completing in February 2010.

Taking roughly six months to complete Lisa felt that the VQ helped to consolidate her knowledge and also gave her opportunity to self audit impact.

With a new lease of enthusiasm after meeting other like minded professionals Lisa was motivated to get back to learning.

On how the qualification was delivered Lisa said:

'Well worth doing! Very well delivered and easy to understand and follow, the support from the trainers and the assessor was excellent and invaluable. I would definitely use STAR again.'

For more information please do not hesitate to contact STAR using the number below.

